



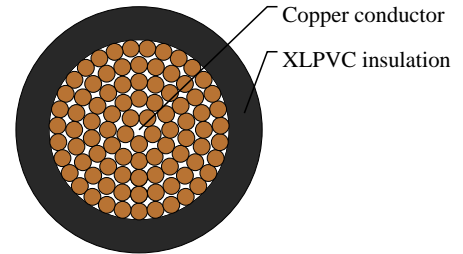
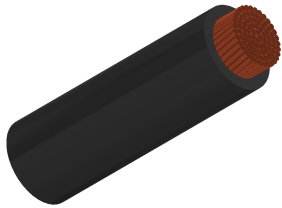
# Caledonian

Automotive Cables

www.caledonian-cables.com

marketing@caledonian-cables.com

## AVXSF 1C25



### APPLICATIONS

This XLPVC insulated single-core cable is used in low voltage circuits in automobiles(vehicles and motorcycles)

### STANDARDS

Standard Compliance: HKMC ES 91110-05

### CABLE CONSTRUCTION

Conductor: Annealed stranded copper

Insulation: Cross-linked Polyvinyl Chloride(XLPVC)

Standard Compliance: HKMC ES 91110-05

### PHYSICAL AND THERMAL PROPERTIES

Operating temperature: -45 °C to +200°C

### DIMENSION AND PARAMETERS

No. of Cores × Cross-sectional Area	No. and Dia. of Wires	Diameter of Conductor (max.)	Nominal Insulation Thickness	Overall Diameter (min.)	Overall Diameter (max.)	Approx. Weight	Electrical Resistance at 20°C (max.)
No. × mm <sup>2</sup>	no./mm	mm	mm	mm	mm	kg/km	MΩ/m
1x25	AVXSF 1C25	7.1	1.3	9.7	10	280	0.76